



REQUEST TO EXIT BUTTON

EXIT BUTTONS

Market leading green dome button, that is both hard wearing and cost effective. Suitable for use in applications up to 30V.



EBGBWOC02/PTE



EBGB/AP/PTE



EBGB/AP/DR

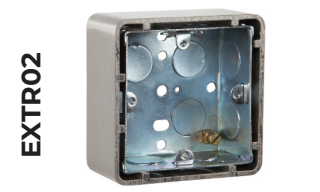
SPECIFICATION	FEATURES	OTHER PRODUCTS
---------------	----------	----------------

EBGBWOC02

- Contacts: Double Pole N/O - N/C
- Output: 4Amp contact @ 30V AC/DC
- Wear resistant legend
- Security screws (allen key type)
- Internal or External use
- Button rated IP66 ingress protection
- Silver contacts
- Operating temperature -20° to +60°c
- Operating travel: 2mm
- Contact resistance: 10m OHM (Max)
- Operating life (mechanical): 1,000,000

EBGBWOC02

- All plastic large green dome button
- Momentary operation / contact
- High impact plastic back box
- Can be surface or flush fitting
- Easy clean surface
- Ideal for general / sensitive areas
- Screw footprint for flush fitting onto standard back box
- Distance between fixing holes 60mm
- Anti rotational mounting



DIMENSIONS	CONTENTS
------------	----------

EBGBWOC02

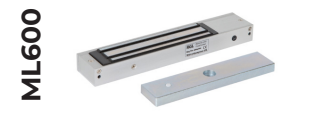
- 85H x 85W x 32D (mm)
- 248g Boxed / • 200g Unboxed

EBGB/AP

- 85H x 39W x 28D (mm)
- 128g (Boxed) • 106g (Unboxed)

EBGBWOC02

- Green Dome Exit Button
- Stainless Steel Plate (2mm)
- 2 Security Screws
- Allen Key
- Surface Box



Manufactured by a BSIA Member