



STE-P TO EXIT

HELPING TO COMBAT COVID-19

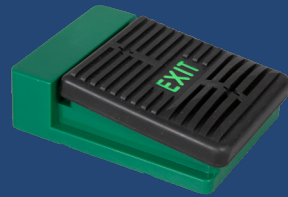


EXISTING
BUTTON



USE
REPLACEMENT
COVER →

→
TWO WIRE
CONNECTION



RGL have taken a step closer to a truly hands free solution to exit devices.

NO HANDS.

The new STE-P foot operated switch can easily be fitted as a replacement to all existing exit switches.

NO POWER NEEDED.

Only a two wire connection from the STE-P switch to the existing button/new install.

COMES WITH STE-P PLATE.

Printed with glow in the dark directional signage.

FOR SURFACE FITTING.

The PBB02/GN back box may be needed when wiring into wall.

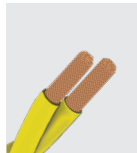


CABLE NOT INCLUDED



STEP ONE

Install STE-P near to the existing button or new install.



STEP TWO

Wire (two wires) the STE-P foot operated switch to the existing exit button. No power is needed.



STEP THREE

Replace button and plate with STE-P plate designed to glow in the dark with directional signage



STEP FOUR

Enjoy hands free, touch free, egress from RGL



TOUCH FREE EXIT DEVICE

HELPS STOP THE SPREAD OF GERMS

TOUCH FREE

STE-P To EXIT ONLY FROM RGL



**TOUCH FREE
ACCESS**

STE-P

New from RGL's ever expanding range of touch free exit devices. "Innovators of Access Control"

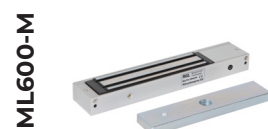
SPECIFICATION

- STE-P
- Contacts: Double pole NONC contacts
 - Output: 4Amp contact @ 30V AC/DC
 - Dual voltage 12/24 VDC @ 45mA operating
 - Moulded legend (various options available)
 - Security screws (allen key type)
 - Silver contacts
 - Operating temperature -20° to +60°c
 - Operating travel: 2mm
 - Contact resistance: 10m OHM (Max)
 - Operating life (mechanical): 1,000,000

FEATURES

- STE-P
- Step to Exit Plate / Device
 - High impact plastic back box
 - Moulded rubber surface, hard wearing
 - Can be fitted to wall or floor (kick plate or foot plate)
- Step to Exit Plate
- Distance between fixing holes 60mm
 - Includes Step to Exit Plate - retrofit in place of traditional exit button
 - Illuminous Legend
 - Made from 2mm easy clean plastic

OTHER PRODUCTS



DIMENSIONS

- STE-P
- 120x90x35 (mm)
 - 254g (Boxed)
 - 206g (Unboxed)
- PLATE
- 85x85 (mm)

CONTENTS

- STE-P
- Foot operated switch
 - Step to Exit Plate
 - Screw bag, with rubber gromits



Manufactured by a BSIA Member