



Electronics Ltd

MOMENTARY KEY SWITCH

KEY SWITCHES

An expanded range of key switches that complement our market leading range of access control solutions.



KS-2

SPECIFICATION

- KS-2
- Momentary on/off operation
 - Key removal in off position
 - Keyed alike
 - Supplied with 2 x keys
 - Voltage free contacts
 - NONC contacts > 1 million operations
 - Rated IP54 ingress protection
 - Etched legend (ON - OFF)
 - Security screws

FEATURES

- KS-2
- Functional design
 - Easy to operate
 - Use for secure override
 - Easy clean surface (ideal for hospitals/public areas)
 - Screw footprint for surface fitting onto standard back box
 - Footprint for mounting onto flush back box

ALTERNATIVES

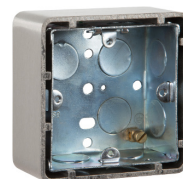
- KS-1 (Latching Operation)
- KS-3 (Euro Key Switch)
- JMB/KS-1 (Latching Key Switch in Jamb Box)
- JMB/KS-4 (3 Position Key Switch in Jamb Box)
- WP-KS-1 or 2 (Weatherproof Key Switch)
- EXT/AP/KS-1 or 4 (Architrave Extrusions KS)

OTHER PRODUCTS

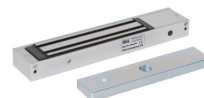
WP-KS-1



EXTR02



ML600



TRAN01/REC01



DIMENSIONS

- KS-2
- 85x85x50/40 (mm) (HxWxD)
 - 260g (Boxed)
 - 212g (Unboxed)

CONTENTS

- KS-2
- Key Switch
 - Stainless Steel Plate (2mm)
 - 2 x Keys (2803)
 - 2 Security Screws
 - Allen Key
 - Shrouded Surface Box



Manufactured by a BSIA Member