



Electronics Ltd

INTERNAL KEYPAD

KEYPADS

Market leading keypads and door entry accessories, as well as complete door access control solutions.

Can be purchased as part of a complete kit



KP25

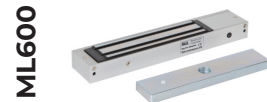


ACKIT-2

SPECIFICATION FEATURES OTHER PRODUCTS

- KP25
- Economy keypad
 - Stainless steel faceplate
 - Surface mounted plastic back box
 - Internal use
 - Backlit keys
 - 12VDC
 - Up to 100 unique users

- KP25
- Stylish design
 - Audio key operation
 - Single output door mode
 - Adjustable output timer on lock only
 - 4-8 digit (Multi user codes)
 - Egress input
 - Ideal for simple access entry systems
 - Non volatile memory in power failure



- ### DIMENSIONS
- KP25
- 117x74x33/48 (mm) (HxWxD)
 - 200g (Boxed)
 - 142g (Unboxed)

- ### CONTENTS
- KP25
- Keypad
 - Instructions
 - Screw bag
 - Resistor



Manufactured by a BSIA Member