

Electric Locking Drop Bolt Range

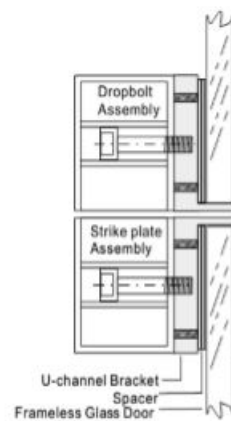


Glass Door Drop Bolt

Technical specifications

- Operating voltage - 12VDC
- Standby current - 120mA
- Operating current - 900mA
- Suitable for double action in swining and out swinging doors.

Dropbolt	148x42x39 (mm)	Glass Door Drop Bolt	1.79kg Boxed
Strike Plate	148x42x25 (mm)	Glass Door Drop Bolt	



FEATURES

- Robust aluminium.
- Fail-safe operation.
- Long life drop bolt.
- Auto locking after 3, 6 or 9 seconds.
- Greater than 500,000 operation.
- Auto relocking timer setting.

Other items in the RGL range.

