

RGL

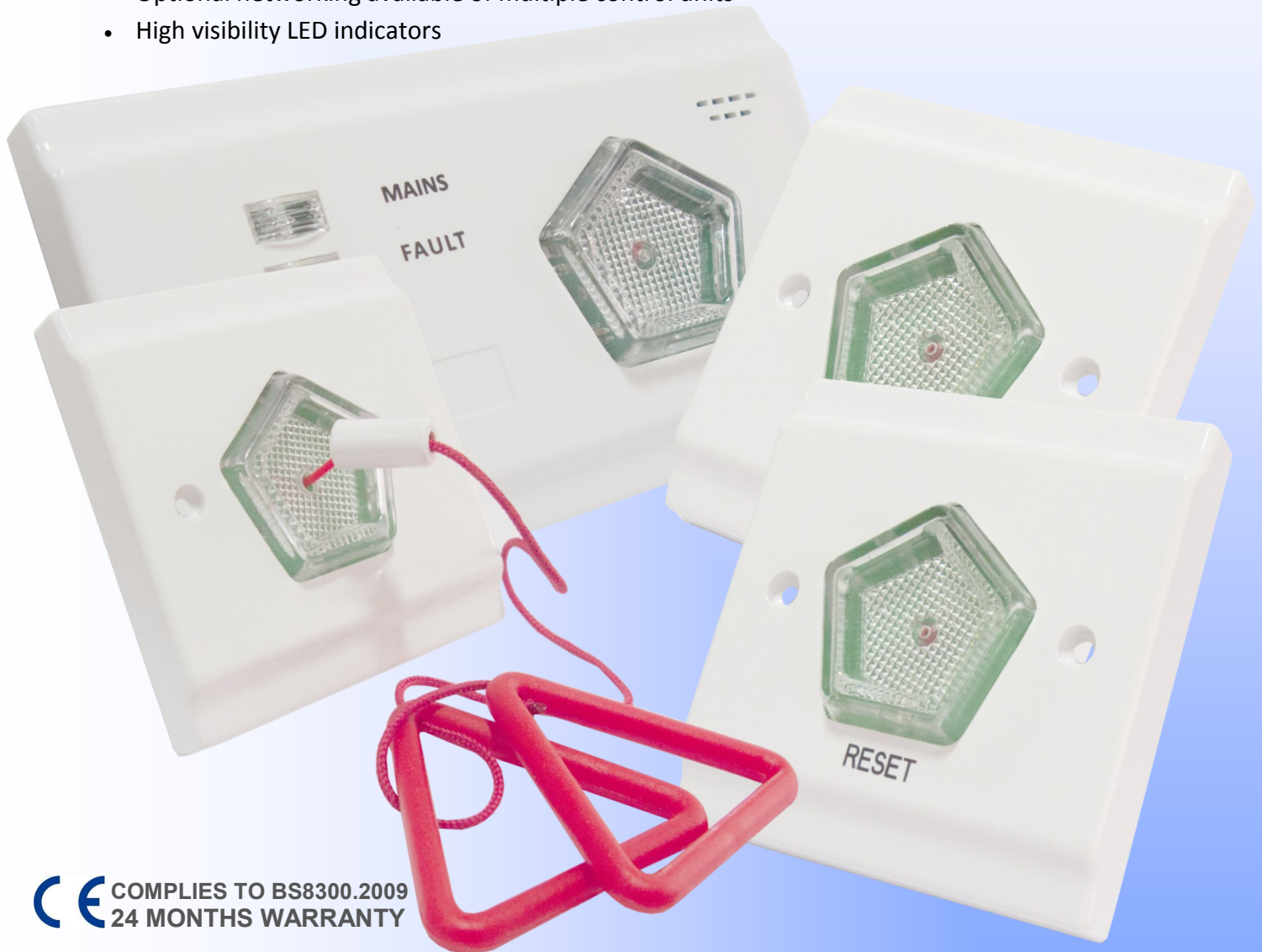
CALL FOR ASSISTANCE SYSTEM (C4A-4)

RGL

KEY FEATURES:

- Appealing design and simple to use
- Two wired system
- Integral power supply
- On-board NO/NC Relay (triggered on activation of Pull Cord)
- Integral Reset button
- Power on indicator for mains supply
- Optional networking available of multiple control units
- High visibility LED indicators

NEW!
TWO WIRE SYSTEM



CE COMPLIES TO BS8300.2009
24 MONTHS WARRANTY

- High output audible sounder
- Reset unit with reassurance LED & sounder
- Flush mounted 'Pull for assistance' cord with reassurance LED
- Over Door indicator lamp with powerful sounder
- Optional Battery back up includes
 - Standby Period—24 Hours
 - Alarm Period—45 Minutes

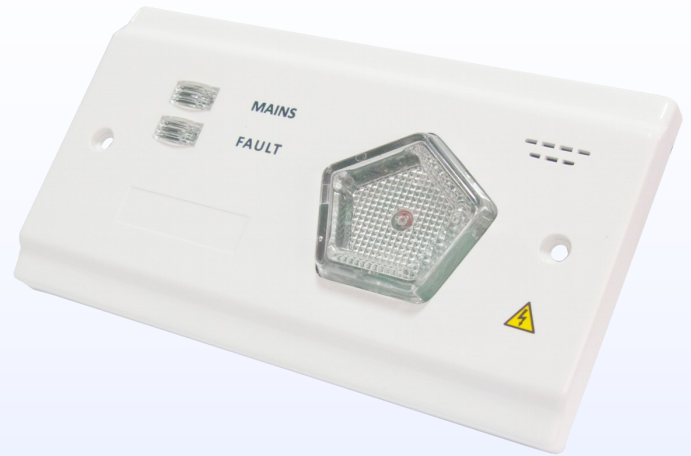
BATTERY NOT INCLUDED

Main Control Unit (C4A-MAIN):

- Integral power supply
- Two wired system
- On-board NO/NC Relay
- Integral Reset button
- Power on indicator for mains supply
- Selectable reset (3 Options)
- Optional network expansion
- Optional Battery back up includes
 - Standby Period—24 Hours
 - Alarm Period—45 Minutes

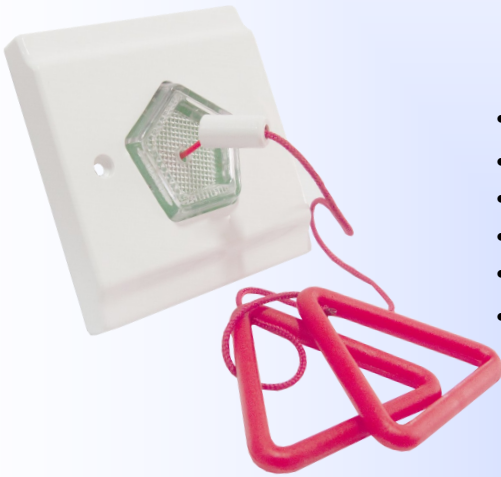
BATTERY NOT INLCUDED

- Dimensions: 145mm x 85mm
- Flush Fitting requires 25mm Deep Double Gang Box



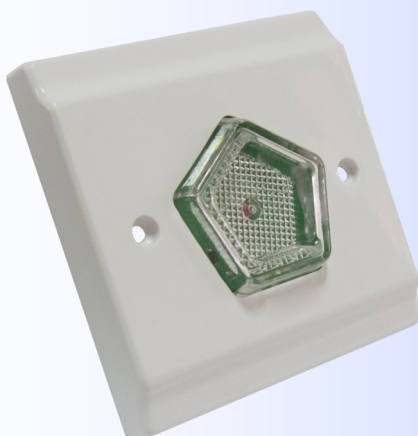
Pull Cord (C4A-PC):

- Flush mounted 'Pull for assistance' cord with reassurance LED
- Red Pull Cord with 2 x Red Handles
- Pull Cord Length: 3 Meters
- Red Handles size: 50mm x 50mm x 50mm
- Plate Dimensions: 85mm x 85mm
- Flush Fitting requires 25mm Single Gang Box
 - Only compatible with RGL C4A-MAIN



Reset Button (C4A-RES):

- Integral sounder and LED indication
- Dimensions: 85mm x 85mm
- Flush Fitting requires 25mm Single Gang Box
- Only compatible with RGL C4A-MAIN



Over Door Indicator (C4A-IND):

- Powerful sounder and High Bright Red LED indication.
- Dimensions: 85mm x 85mm
- Flush Fitting requires 25mm Single Gang Box
- Only compatible with RGL C4A-MAIN

NEW!
TWO WIRE SYSTEM

RGL

CALL FOR ASSISTANCE SYSTEM
(C4A-4)

RGL