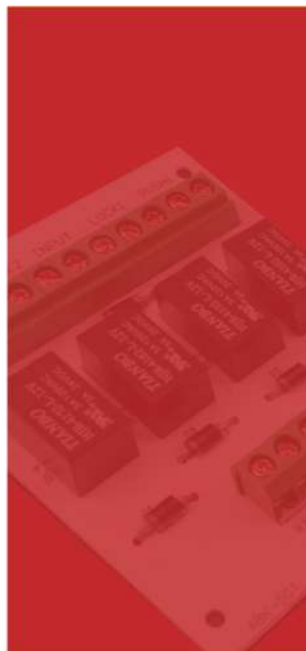
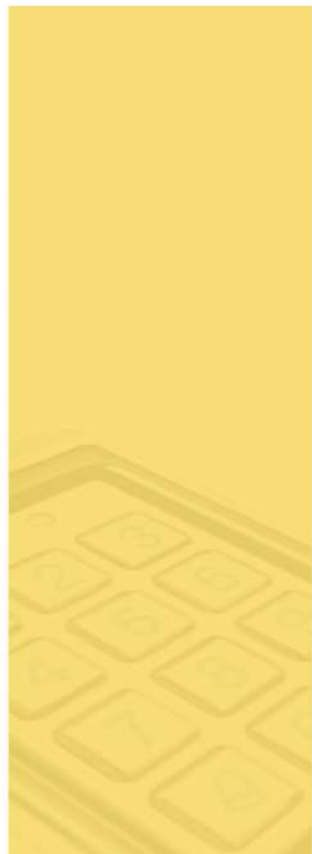
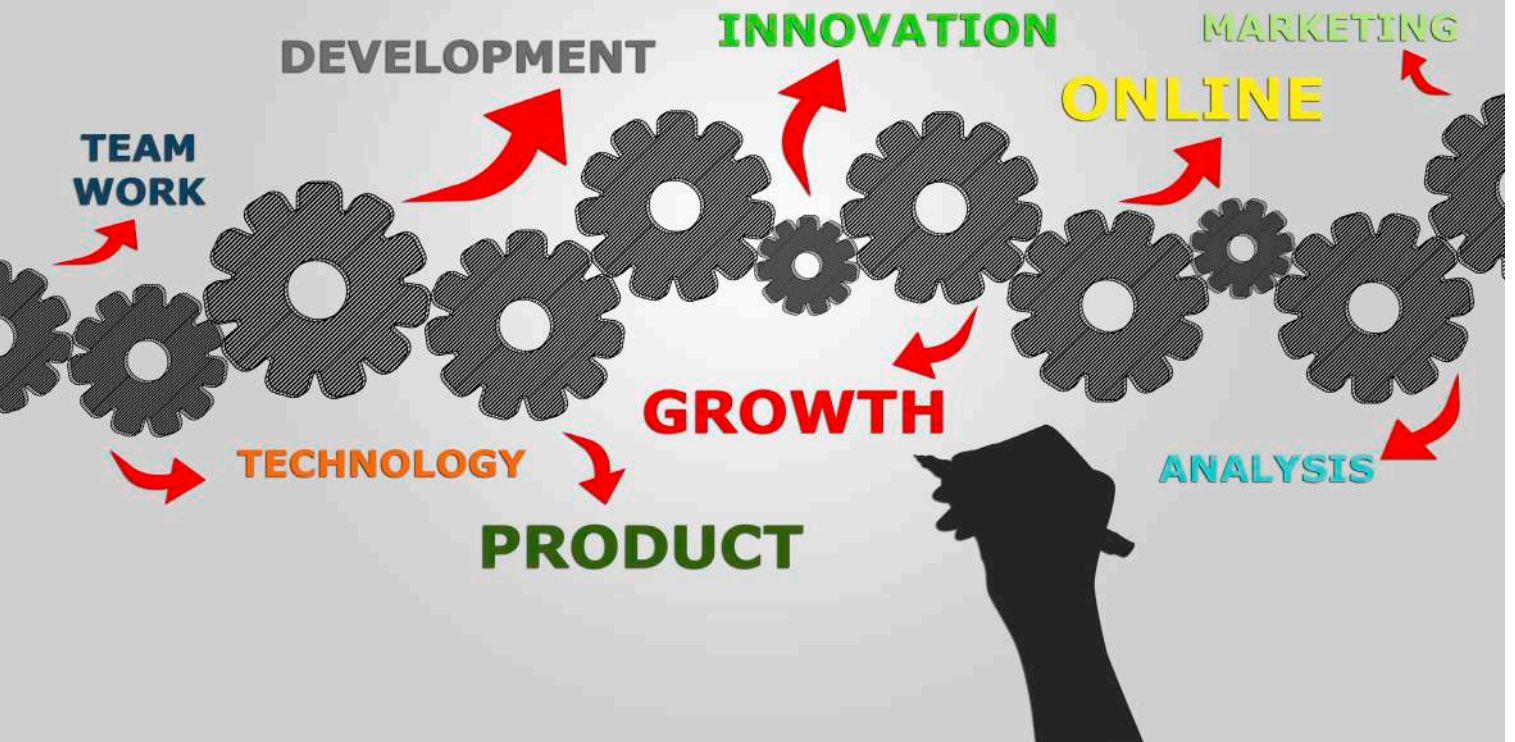




Product Catalogue





“Innovators of Access Control”

“At RGL our vision is to be the market leader! We are innovators; not only do we actively seek to improve and develop our current products but we also strive to revolutionise the Access Control market.

Our products can compliment and support CCTV, Intruder and Fire Systems. We can also offer a complete package for those seeking to improve their Access Control range.

We offer value for money as well as technical support and advice to ensure you choose the right products for you and your needs. If you can't find what you are looking for, please speak to one of our technical support team members to see if we can offer a bespoke product or solution to suit your requirements.”

Ray Jones
Managing Director



Electronics Ltd

Ordering couldn't be easier; call our helplines for expert sales and technical support:

Monday to Friday
8.30am to 5.00pm

Email: sales@rgl.co
Tel: +44 (0)1902 656667
Fax: +44 (0)1902 427394

“Products to Trust - Power to Help”



Contents

| | | |
|----------|--|--------------|
| 1 | EXIT DEVICES | |
| | <ul style="list-style-type: none">- Exit Buttons- Surface Boxes- Key Switches- Dual Units- Emergency Door Release (Call Point)- Firemans Switches | 4-18 |
| 2 | ACCESS KEYPADS | |
| | <ul style="list-style-type: none">- Standard Keypads- External Keypads- Proximity Devices | 20-23 |
| 3 | ELECTRONIC LOCKING | |
| | <ul style="list-style-type: none">- Maglocks- Electric Release- Specialist Locks- Door Retainers | 24-33 |
| 4 | POWER SUPPLIES | |
| | <ul style="list-style-type: none">- 12VDC Power Supplies- 24VDC Power Supplies- Fire Power Supplies- Special Power Supplies | 34-39 |
| 5 | CCTV POWER SUPPLIES | |
| | <ul style="list-style-type: none">- 12VDC Power Supplies- Inline Power Supplies- 24VAC Power Supplies | 40-43 |
| 6 | ACCESSORIES | 44-50 |
| 7 | DISABLED TOILET ALARM | 52-54 |
| 8 | FIRE | 56-58 |



FIRE



ACCESS CONTROL



CCTV



INTRUDER

extrusions



Electronics Ltd



extr02



Exit Devices

- Narrow style exit buttons
- Plastic exit buttons
- Green dome exit buttons
- Stainless Steel exit buttons
- Push plate exit buttons
- DDA exit buttons
- Other exit buttons (inc Touch Free)
- Bespoke exit buttons
- Wireless exit buttons
- Surface boxes
- Key switches
- Dual units
- Emergency door release (call point)
- Firemans switches

Narrow Style Exit Buttons

Key Features

Narrow, Surface or Flush, Includes Back Box, *Security Screws



EBLS/AP/PTE (Press to Exit) | EBL5/AP/DR (Door Release)

- Surface or flush fitting
- Changeover contact
- Rating : 10 amp contact @240V AC/DC
- Wear resistant legend
- Contains UV stabilisers
- 85x39x28 (mm)



EBGB05P/PTE (Press to Exit) | EBGB05P/DR (Door Release)

- Surface or flush fitting
- High impact plastic back box with green dome button
- Double pole NO/NC contact
- Rating : 4 amp contact @30V AC/DC
- Security screws (allen key type)
- Wear resistant legend
- Contains UV stabilisers
- 85x39x28 (mm)



EBGB/AP/PTE (Press to Exit) | EBGB/AP/DR (Door Release)

- Surface or flush fitting
- Vandal resistant
- Stainless steel with green dome button
- Double pole NO/NC contact
- Rating : 4 amp contact @30V AC/DC
- Security screws (allen key type)
- Wear resistant legend
- IP66 Rated
- 85x39x28 (mm)



EBSS/AP/PTE (Press to Exit) | EBSS/AP/DR (Door Release)

- Surface or flush fitting
- Vandal resistant
- Stainless steel plate with stainless steel button
- Double pole NO/NC contact
- Rating : 4 amp contact @30V AC/DC
- Security screws (allen key type)
- Wear resistant legend
- 85x39x28 (mm)

Plastic Exit Buttons

Key Features

Standard, Plastic, Surface or Flush, Includes Back Box, *Security Screws



EBGB01P/PTE (Press to Exit)

EBGB01P/DR (Door Release)

- Surface or flush fitting
- High impact plastic back box with green dome button
- Double pole NO/NC contact
- Rating : 4 amp contact @30V AC/DC
- Security screws (allen key type)
- Wear resistant legend
- Contains UV stabilisers
- 85x85x28 (mm)



EBLS/PTE (Press to Exit)

EBLS/DR (Door Release)

- Surface or flush fitting
- Changeover contact
- Rating: 10 amp contact @ 240V AC/DC
- Wear resistant legend
- Contains UV stabilisers
- 85x85x28 (mm)



EBWLS/PTE (Press to Exit)

EBWLS/DR (Door Release)

- Surface or flush fitting
- Changeover contact
- Rating: 10 amp contact @ 240V AC/DC
- Wear resistant legend
- Contains UV stabilisers
- 85x85x28 (mm)

Green Dome & Stainless Steel Exit Buttons

Key Features

Standard, Green Dome or Stainless Steel, Surface or Flush, Includes Back Box, *Security Screws (Now available with our new range of extrusions and gang boxes.)



EBGBWC02/PTE (Press to Exit)

EBGBWC02/DR (Door Release)

- Surface or flush fitting
- Stainless steel with green dome button (with collar)
- Double pole NO/NC contact
- Rating : 4 amp contact @30V AC/DC
- Security screws (allen key type)
- Wear resistant legend
- Vandal resistant
- IP66 Rated
- 85x85x28 (mm)

additional alternatives



EBGBWOC02/PTE (Press to Exit)

EBGBWOC02/DR (Door Release)

- Surface or flush fitting
- Stainless steel with green dome button
- Double pole NO/NC contact
- Rating : 4 amp contact @30V AC/DC
- Security screws (allen key type)
- Wear resistant legend
- Vandal resistant
- IP66 Rated
- 85x85x28 (mm)



EBSS02/PTE (Press to Exit)

EBSS02/DR (Door Release)

- Surface or flush fitting
- Stainless steel plate with stainless steel button (21mm)
- Innovative high impact plastic back box
- Double pole NO/NC contact
- Rating : 4 amp contact @30V AC/DC
- Security screws (allen key type)
- Wear resistant legend
- Vandal resistant
- 85x85x28 (mm)



EBSS25/PTE (Press to Exit)

EBSS25/DR (Door Release)

- Surface or flush fitting
- Stainless steel plate with stainless steel button (25mm)
- Innovative high impact plastic back box
- Double pole NO/NC contact
- Rating : 4 amp contact @30V AC/DC
- Security screws (allen key type)
- Wear resistant legend
- Vandal resistant
- 85x85x28 (mm)



Push Plate Exit Buttons

Key Features

Standard, Push Plates, Stainless Steel or Plastic, Surface or Flush, Includes Back Box,
*Security Screws



EBPP02 (Exit only)

- Surface or flush fitting
- Stainless steel with Large 360° push plate
- Double pole NO/NC contact
- Rating : 4 amp contact @30V AC/DC
- Security screws (allen key type)
- Machine cut legend (lifetime guarantee)
- IP55 rated
- 85x85x28 (mm)

additional alternatives



EBPP02P/G (Exit only)

- Surface or flush fitting
- Standard green plastic with large 360° surface mounted push plate
- Double pole NO/NC contact
- Rating : 4 amp contact @30V AC/DC
- Security screws (allen key type)
- Machine cut legend (lifetime guarantee)
- IP55 rated
- 94x94x28 (mm)



EBPP02P/W (Exit only)

- Surface or flush fitting
- Standard white plastic with large 360° surface mounted push plate
- Double pole NO/NC contact
- Rating : 4 amp contact @30V AC/DC
- Security screws (allen key type)
- Machine cut legend (lifetime guarantee)
- IP55 rated
- 94x94x28 (mm)

DDA Exit Buttons

Key Features

DDA, Plastic, Surface or Flush, *Includes Back Box, *Security Screws



EBPP02P/DDA

EBPP02P/DDA/WOPTO



- Surface or flush fitting
- Standard white plastic with large 360° surface mounted push plate
- Double pole NO/NC contact
- Rating : 4 amp contact @30V AC/DC
- Security screws (allen key type)
- Wear resistant legend
- Complies with BS8300
- IP55 Rated
- 94x94x36 (mm)



EBLPP02P/ W



- Surface or flush fitting
- Stainless steel with 360° push plate
- Double pole NO/NC contact
- Rating : 4 amp contact @30V AC/DC
- Complies with BS8300
- Security screws (allen key type)
- IP55 Rated
- 118x118x53 (mm)

EBLPP02



- Flush fitting as standard
- Surface fitting with SSB03 or PBB03/BK
- Stainless steel with 360° push plate
- Double pole NO/NC contact
- Rating : 4 amp contact @30V AC/DC
- Complies with BS8300
- Security screws (allen key type)
- 114x114x36 (mm)

EBLPP04



- Surface or flush fitting
- Stainless steel push plate
- Double pole NO/NC contact
- Rating : 4 amp contact @30V AC/DC
- Complies with BS8300
- Security screws (allen key type)
- 129x129x54 (mm)

Key Features

Variety of buttons to suit a number of situations - Touch Free, Red Dome and Weatherproof



EBNT/TF-1



- No touch infra red switch
- Illuminated sensor - Green to Red
- Hands free operation
- 12-24VDC
- Security screws (allen key type)
- Wear resistant legend
- Adjustable relay opening times (0.5 to 20secs)
- Adjustable proximity distance (3 to 12cm)
- 85x85x28 (mm)



Touch Free

EBRBWC



- Stainless steel with red dome button (with collar)
- Double pole NO/NC contact
- Rating : 4 amp contact @30V AC/DC
- Security screws (allen key type)
- Blank legend
- Surface or flush fitting
- Vandal resistant
- Back box not included
- 85x85x40/50 (mm)

Red Dome

WP-EBGBWC02/PTE



- Stainless steel with green dome button (with collar)
- Double pole NO/NC contact
- Rating : 4 amp contact @30V AC/DC
- Security screws (allen key type)
- Wear resistant legend
- Surface or flush fitting
- Vandal resistant
- Comes with Gasket & Gland
- IP66 Rated
- 85x85x40/50(mm)

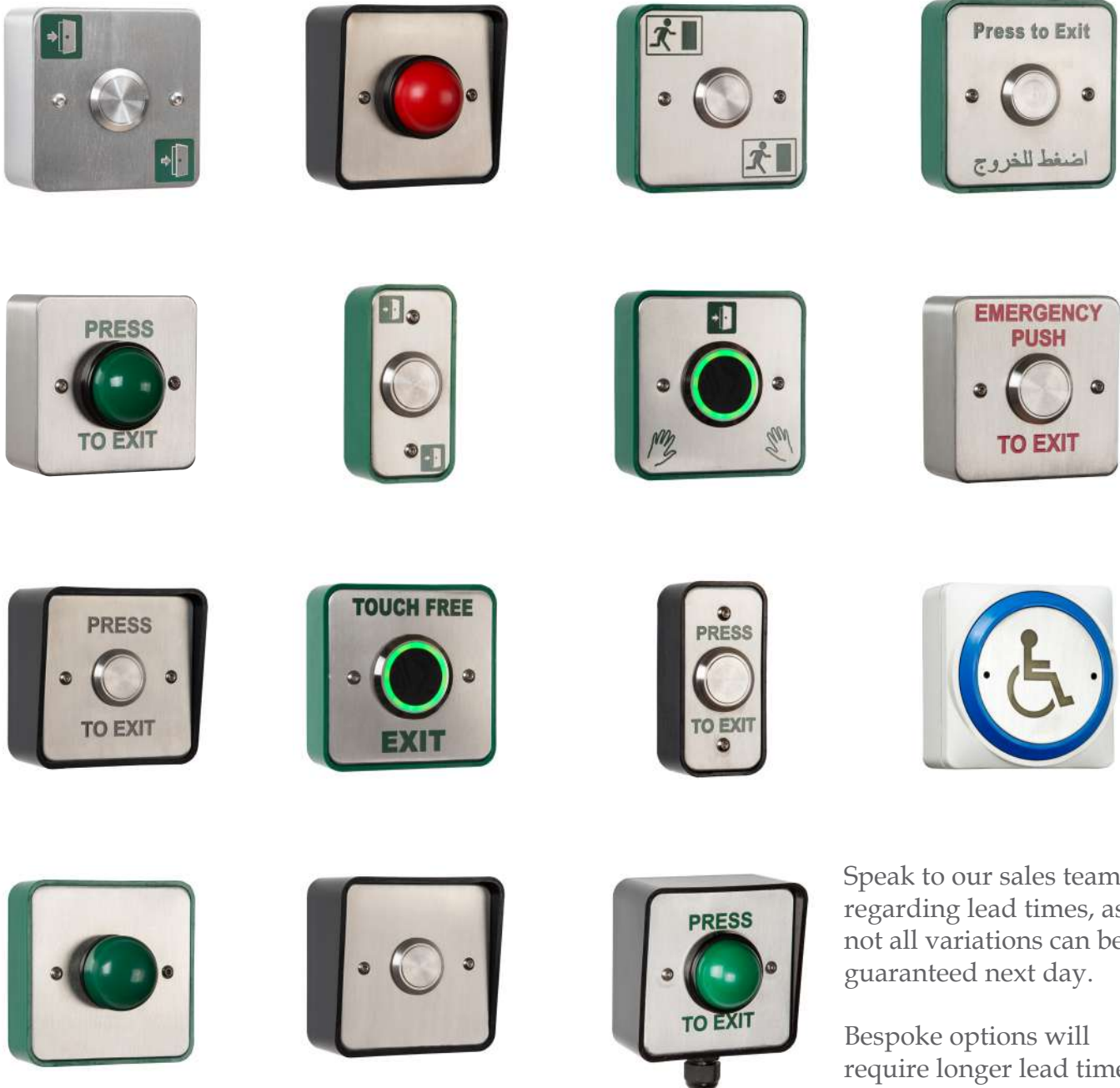
WP-EBGBWC02/DR

Weatherproof

Bespoke Exit Buttons

specialist options available

If you need a specific button then just ask, we have a vast range of options readily available, or can manufacture to order.



Speak to our sales team regarding lead times, as not all variations can be guaranteed next day.

Bespoke options will require longer lead times.

Wireless Exit Buttons

Key Features

Wireless, Plastic, Surface, Includes Back Box, *Security Screws.
Range subject to site conditions



WL-EBLPP04/BK



- Stainless steel push plate
- Wireless operations (433Mhz)
- 12VDC
- Double pole NO/NC contact
- Rating : 4 amp contact @30V AC/DC
- Complies with BS8300
- Security screws (allen key type)
- Surface fitting
- Inbuilt transmitter
- Supplied with a 27A type replaceable battery
- 129x129x54 (mm)



WL-EBLPP02/BK



- Stainless steel with 360° push plate
- Wireless operations (433Mhz)
- 12VDC
- Double pole NO/NC contact
- Rating : 4 amp contact @30V AC/DC
- Complies with BS8300
- Security screws (allen key type)
- Surface fitting with PBB03/BK
- Inbuilt transmitter
- Supplied with a 27A type replaceable battery
- 129x129x54 (mm)



WL-EBPP02P/GN



- Standard green plastic with large 360° surface mounted push plate
- Wireless operations (433Mhz)
- 12VDC
- Double pole NO/NC contact
- Rating : 4 amp contact @30V AC/DC
- Security screws (allen key type)
- Machine cut legend
- Surface fitting
- Inbuilt transmitter
- Supplied with a 27A type replaceable battery
- 94x94x28 (mm)



TRAN01/REC01

TRAN01



- Wireless operations (433Mhz)
- 12VDC
- TRAN01 operates as a momentary device
- Relay contacts can be toggled
- Lock and Unlock buttons on remote
- Multiple transmitters can be used on each receiver
- Supplied with a 27A type replaceable battery
- 40x70x21 (mm) (REC01)



Key Features

Range of back boxes

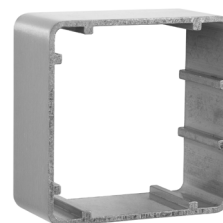


EXTR02



- Aluminium extrusion
- 38mm deep
- 85x85x38 (mm)
- Includes adjustable single gang box (35mm)
- 72x72x35 (mm)

EXTR03



- Aluminium extrusion
- 38mm deep
- 85x85x38 (mm)

SSBB02



- 42mm stainless steel back box
- Single gang
- 85x85x42 (mm)

SSBB03



- Stainless steel back box
- DDA surface box
- For use with EBLPP02
- Large DDA buttons
- 118x118x36 (mm)

SSBB03



- Large plastic back box
- DDA surface box
- For use with EBLPP02
- Large DDA buttons
- 128x128x36 (mm)

Key Features

Range of plastic back boxes

PBB02/GN

PBB02/BK



- 28 mm back box
- Allows for conduit entry
- Available in Green or Black
- 90x90x28 (mm)



PBB05/GN

PBB05/BK



- 40 mm back box
- Allows for conduit entry
- Use for all standard products where a deeper box maybe required
- Available in Green or Black
- 90x90x40 (mm)



PBBSHR/GN

PBBSHR/BK



- 40 mm shrouded back box
- Allows for conduit entry
- Use for all standard products where a deeper box maybe required
- Available in Green or Black
- 90x90x40/50 (mm)



PBB04/GN

PBB04/BK



- 28 mm architrave back box
- Allows for conduit entry
- Available in Green, Black or White
- 43x90x28 (mm)



Key Switches

Key Features

Standard, Key Switches, Stainless Steel, Surface or Flush, *Includes Back Box, Security Screws



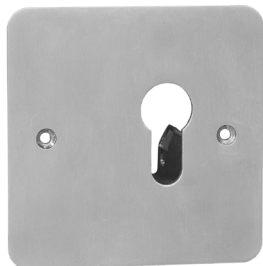
KS-1

- Key switch
- Latching operation
- High impact plastic back box
- Security screws (allen key type)
- Supplied with 2 x keys
- Voltage free contacts
- Wear resistant legend
- 12-24VDC
- 85x85x40/50 (mm)



KS-2

- Key switch
- Momentary operation
- High impact plastic back box
- Security screws (allen key type)
- Supplied with 2 x keys
- Voltage free contacts
- Wear resistant legend
- 12-24VDC
- 85x85x40/50 (mm)



KS-3

- Euro profile key switch
- Latching changeover contacts
- Voltage free contacts
- Cylinder NOT supplied
- 12-24VDC
- 85x85 (mm)

Dual Unit Range

Key Features

Dual Unit, Combined Call Point and Exit Device, Stainless Steel, Surface or Flush, Includes Back Box, Security Screws



DU-GB/PTE (Press to Exit)

- Stainless steel with green dome button
- Combined emergency door release button (resettable)
- Buzzer and LED indication
- Triple pole as standard
- 12-24VDC
- Wear resistant legend
- Security screws (allen key type)
- 160x90x42/37 (mm)



DU-SS/PTE (Press to Exit)

- Stainless steel with stainless steel button (25mm)
- Combined emergency door release button (resettable)
- Buzzer and LED indication
- Triple pole as standard
- 12-24VDC
- Wear resistant legend
- Security screws (allen key type)
- 160x90x42/37 (mm)



DU-NT/TF (Touch free)

- Stainless steel with illuminated sensor
- Combined emergency door release button (resettable)
- Buzzer and LED indication
- Triple pole as standard
- 12-24VDC
- Wear resistant legend
- Security screws (allen key type)
- 160x90x42/37 (mm)

- Adjustable relay opening times (0.5 to 20secs)
- Adjustable proximity distance (3 to 12cm)



DU-KS/1 (Key Switch)

- Stainless steel with latching key switch
- Combined emergency door release
- Buzzer and LED indication
- Triple pole as standard
- 12-24VDC
- Wear resistant legend
- Security screws (allen key type)
- 160x90x42/37 (mm)

DU-KS/2 (Key Switch)

- Stainless steel with momentary key switch
- Combined emergency door release
- Buzzer and LED indication
- Triple pole as standard
- 12-24VDC
- Wear resistant legend
- Security screws (allen key type)
- 160x90x42/37 (mm)

RESET-KEY



Emergency Door Release Range

Key Features



Standard Call Points, Protective Cover, Warning Buzzer, LED Indication, Security Screws



EDR - 1

- Single pole
 - Emergency door release (resettable)
 - Key reset (not replacement glass)
 - Protective plastic cover (flips up)
 - Warning buzzer and LED indication
 - 12-24VDC
 - 88x88x52 (mm)
- Single pole allows you to remove the positive supply



EDR - 2

- Double pole
 - Emergency door release (resettable)
 - Key reset (not replacement glass)
 - Protective plastic cover (flips up)
 - Warning buzzer and LED indication
 - 12-24VDC
 - 88x88x52 (mm)
- Double pole allows you to remove the positive AND negative supply



EDR - 3

- Triple pole
 - Emergency door release (resettable)
 - Key reset (not replacement glass)
 - Protective plastic cover (flips up)
 - Warning buzzer and LED indication
 - 12-24VDC
 - 88x88x52 (mm)
- Triple pole allows you to remove the positive AND negative supply, as well as an ancillary device

RESET-KEY



Firemans Switch Range

Key Features

Stainless Steel, Surface or Flush, Security Screws



FMS-SURF

- Stainless steel
- NO/COM/NC
- Changeover contacts
- Tamper proof fixings
- Drop key units
- Key not included with units
- Surface unit
- 127x157x76 (mm)



FMS-FLUSH

- Stainless steel
- NO/COM/NC
- Changeover contacts
- Tamper proof fixings
- Drop key units
- Key not included with units
- Flush unit
- 125x155x76 (mm)



FMS-KEY

- Drop key
- For use with Firemans switches

keypads

economy



standard



external



proximity



wiegand





Access Keypads

Standard keypads

External keypads

Proximity keypads & accessories

Standard Keypad Range

Key Features

Standard range of keypads, Internally rated, Back lit



KP25

- Economy keypad
- Stainless steel faceplate
- Surface mounted plastic box
- Internal use
- Backlit keys
- 12VDC
- LED Indication
- Up to 120 unique users
- Single relay
- 117x74x33/48 (mm)



KP1000

- Internal / External keypad (with rainshield)
- Zinc alloy electroplated casing
- Alarm input / door bell
- Allows upto 500 users
- 12VDC
- LED Indication
- Selectable back light
- Dual relay
- 120x76x25 (mm)



KPX1000

- Internal / External keypad (with rainshield)
- Zinc alloy electroplated casing
- Proximity reader
- Alarm input / door bell
- Allows upto 500 users
- 12VDC
- LED Indication
- Selectable back light
- Dual relay
- 120x76x25 (mm)

Accessories



| | |
|------------|-------------------------------------|
| KP-FOB-BE | Proximity Fob - Blue |
| KP-FOB-GY | Proximity Fob - Grey |
| KP-CARD | Proximity Card - Standard (85x45x1) |
| KP-HD-CARD | Proximity Card - Thick (85x45x2) |

External Keypad Range

Key Features

Externally rated keypads, Stainless Steel, Security Screws



KP50

- Robust heavy duty
- Stainless steel faceplate & keys
- Metal surface black box
- Ideal for external mounting
- LED Indication
- Backlit keys
- 12VDC max 150Ma
- Triple Relay
- Up to 100 unique users
- 125x79x46/54 (mm)



KPX50

- Proximity keypad
- Robust heavy duty
- Stainless steel faceplate & keys
- Metal surface black box
- Ideal for external mounting
- LED Indication
- Backlit keys
- 12VDC max 150Ma
- Dual Relay
- Up to 100 unique users
- 140x79x46/54 (mm)



KPX75

- Robust heavy duty
- Stainless steel faceplate & metal backlit keys
- Compatible with 125KHz EM cards & fobs
- Ideal for external mounting
- LED Indication
- 12VDC max 95Ma
- Dual relay
- Up to 1000 users
- 180x46x21/25 (mm)



Rainshield

- High impact plastic
- Black high gloss finish
- Surface mounted
- Includes gasket
- For use with KP1000, KPX1000, KPX2000
- 150x104x92 (mm)



Proximity Keypad Range

Key Features

Proximity Keypads, External Weigand, Accessories



KPX2000

- Internal / External keypad (with rainshield)
- Zinc alloy electroplated casing
- Proximity reader
- Input for external wiegand reader (RD26-1 or RD26-C)
- Alarm input/ door bell
- Allows upto 500 users
- 12VDC
- LED Indication
- Selectable back light
- 120x76x25 (mm)



PX2000+

- Power supply with integrated keypad
- Input for external wiegand reader (RD26-1 or RD26-C)
- Allows upto 500 users
- 13.8VDC regulated output (1amp)
- Can be supplied in 2amp or 3amp upon request
- Additional battery charging
- Compliant to EMC EN61000-6-1 & 3
- Can house a battery up to 12V 9Ah
- Comes with high impact plastic wiegand reader for external use (RD26-1)
- 265x197x72 (mm)



RD26-1

RD26-C



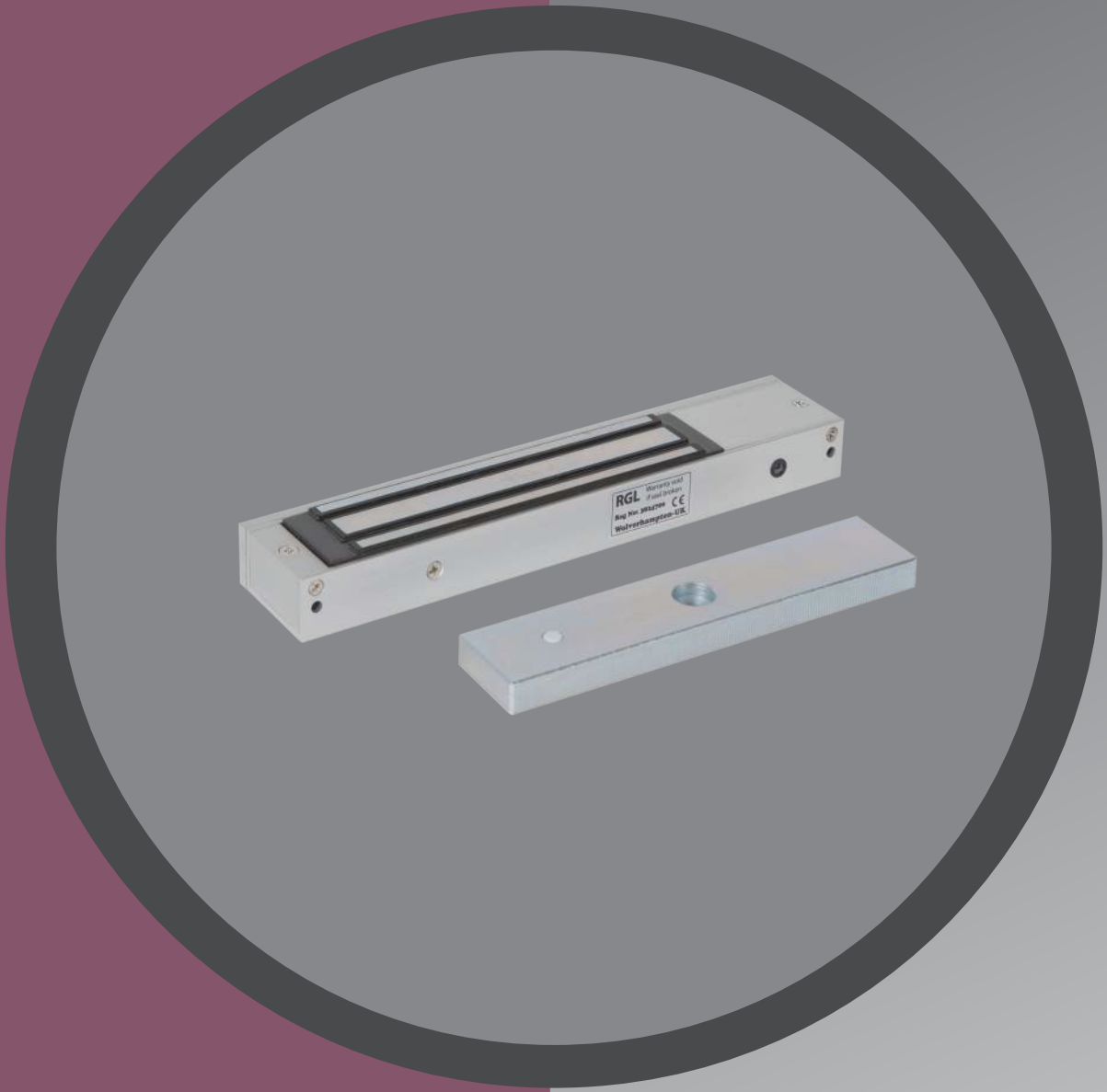
- High impact plastic reader for external use.
- Fully encapsulated to IP65.
- 9-12VDC @ max 50 Ma.
- 26 bit EM formatted reader.
- Wiegand 4 wire connection.
- Card read time of 120mS
- Operating frequency 125kHz
- Maximum transfer distance of 100m (screened cable)
- Operating temperature -20c to 60c
- 78x42x12 (mm) (RD26-1)
- 100x43x20 (mm) (RD26-C)



Accessories

| | |
|------------|-------------------------------------|
| KP-FOB-BE | Proximity Fob - Blue |
| KP-FOB-GY | Proximity Fob - Grey |
| KP-CARD | Proximity Card - Standard (85x54x1) |
| KP-HD-CARD | Proximity Card - Thick (85x54x2) |





Electronic Locking

- Slimline maglocks (& brackets)
- Standard maglocks (& brackets)
- External maglocks (& brackets)
- Micro & mortice maglocks
- Misc bracket range
- Electric release
- Specialist locks
- Door retainers
- Maglock accessories



Slimline Maglock Range



Key Features

Slimline Mini Maglocks, Double, Brackets, Fire Tested



ML600

- Slimline / Mini magnet
- 600lbs (280kg) holding force
- Aluminium housing
- 12/24VDC @480/240mA
- Built in surge protection
- Fire tested to BSEN1634-1-2014
- 30 & 60 minute timber door sets
- 250x42x25 (mm)

ML600-M (Monitored)

- ML600-M includes monitoring contact
- Hall sensor monitoring with relay output NO/NC
- Fire tested to BSEN1634-1-2014
- 30 & 60 minute timber door sets
- 250x42x25 (mm)



BK600ZL

- Adjustable Z & L bracket
- Suitable for ML600 range of magnets
- Fire tested to BSEN1634-1-2014
- 30 & 60 minute timber door sets



ML600-D (Double)

- Slimline / Mini magnet
- 280kgs (600lb) holding force x2
- Aluminium housing
- 12/24VDC @480/240mA x2
- Built in surge protection
- Fire tested to BSEN1634-1-2014
- 30 & 60 minute timber door sets
- 500x42x25 (mm)

ML600-D-M (Double monitored)

- ML600-D-M includes monitoring contact
- Hall sensor monitoring with relay output NO/NC
- Fire tested to BSEN1634-1-2014
- 30 & 60 minute timber door sets
- 500x42x25 (mm)

BK600L

- Adjustable L bracket
- Suitable for ML600 range of magnets
- Fire tested to BSEN1634-1-2014
- 30 & 60 minute timber door sets



AH600



Standard Maglock Range

Key Features

Standard Maglocks, Double, Brackets, Fire Tested



ML1200

- Standard magnet
- 1200lbs (545kg) holding force
- Aluminium housing
- 12/24VDC @600/300mA
- Built in surge protection
- Fire tested to BSEN1634-1-2014
- 30 & 60 minute timber door sets
- 267x73x40 (mm)

ML1200-M (Monitored)

- ML1200-M includes monitoring contact
- Hall sensor monitoring with relay output NO/NC
- Fire tested to BSEN1634-1-2014
- 30 & 60 minute timber door sets
- 267x73x40 (mm)

BK1200ZL

- Adjustable Z & L bracket
- Suitable for ML1200 range of magnets
- Fire tested to BSEN1634-1-2014
- 30 & 60 minute timber door sets



ML1200-D-M (Double Monitored)

- Standard magnet
- 1200lbs (545kg) holding force x 2
- Aluminium housing
- 12/24VDC @600/300mA x2
- Built in surge protection
- Includes monitoring contact
- Hall sensor monitoring with relay output NO/NC
- Fire tested to BSEN1634-1-2014
- 30 & 60 minute timber door sets
- 530x73x40 (mm)

BK1200L

- Adjustable L bracket
- Suitable for ML1200 range of magnets
- Fire tested to BSEN1634-1-2014
- 30 & 60 minute timber door sets



AH1200



External Maglock Range



Key Features

External, Gate Magnets, Stainless Steel, Monitored

EXML600-GATE (Monitored)



- Slimline / Mini magnet
- Weatherproof
- 600lbs (280kg) holding force
- Stainless steel housing
- 12/24VDC @500/250mA
- Built in surge protection
- Includes monitoring contact with relay output
- 1metre long cable
- 220x45x27 (mm)

BKEX600ZL

- Adjustable Z & L bracket
- Suitable for EXML600-GATE magnet



EXML1200-GATE (Monitored)



- Standard magnet
- Weatherproof
- 1200lbs (540kg) holding force
- Stainless steel housing
- 12/24v DC @600/300mA
- Built in surge protection
- Includes monitoring contact with relay output
- 50cm long cable
- 220x60x40 (mm)

BKEX1200ZL

- Adjustable Z & L bracket
- Suitable for EXML1200-GATE magnet



Key Features

Specialist Maglocks, Micro, Mortice

ML100



- Cabinet magnet
- 100lbs (60kg) holding force
- Aluminium housing
- 12VDC @150mA
- Built in surge protection
- Comes with L Bracket
- 80x33x20 (mm)

ML300



- Micro magnet
- 300lbs (180kg) holding force
- Aluminium housing
- 12VDC @300mA
- Built in surge protection
- 170x40x21 (mm)

BK300ZL

- Adjustable Z & L bracket
- Suitable for ML300 range of magnets



MM600-MORT

MM600-MORT



- Slimline / Mini mortice magnet
- 600lbs (280kg) holding force
- Aluminium bracket
- 12/24VDC @480/240mA
- Built in surge protection
- 23cm cable
- 230x38x29 (mm)

- Slimline / Mini mortice magnet
- 600lbs (280kg) holding force
- Aluminium bracket
- 12/24VDC @480/240mA
- Built in surge protection
- Includes monitoring cable
- Hall sensor monitoring with relay output NO/NC
- 23cm cable
- 230x38x29 (mm)

Key Features

Maglock Accessories, Armature Housing, Fire Doors, Glass Doors



AH600

- Armature housing
- Light and strong aluminium armature
- Multiple fixing holes for holding strength
- Supplied with fixing screws and armature securing bolt
- Suitable for ML600 range of armatures
- Removes the need to drill through the door
- 192x45x13 (mm)



AH1200

- Armature housing
- Light and strong aluminium armature
- Multiple fixing holes for holding strength
- Supplied with fixing screws and armature securing bolt
- Suitable for ML1200 range of armatures
- Removes the need to drill through the door
- 196x72x19 (mm)



BK600-U

- Glass door bracket
- Outward opening doors
- Avoids drilling glass
- U bracket only
- For use with ML600 range
- Comes complete with shims for various glass thickness
- For use on doors from 13-15mm
- 180x39x28 (mm)

Key Features

Electric Release, Fail-Safe (Power to Lock), Fail-Secure (Power to Open)



DS-001

FAIL SECURE

- Suitable for metal, wooden and glass doors
- 12V AC/DC (Intermittent use only)
- Euro style release
- Apply power to open (fail secure)
- Mortice / Rim face plates included
- Use with access and door entry systems
- 160x32x25 (mm) Mortice
- 106x32x50 (mm) Rim



DS-002

FAIL SAFE

- Suitable for wooden doors
- 12VDC
- 400kg holding force
- Apply power to lock (fail safe)
- Use with access and door entry systems
- 150x35x28 (mm)



DS-003

FAIL SECURE

- Suitable for wooden doors
- 12VDC
- 400kg holding force
- Apply power to open (fail secure)
- Ansi style lock
- Assymetrical (inc short face plate)
- Use with access and door entry systems
- 150x27/39x34 (mm)



DS-004

FAIL SAFE

- Suitable for wooden doors
- 12VDC
- 400kg holding force
- Apply power to lock (fail safe)
- Ansi style lock
- Assymetrical (inc short face plate)
- Use with access and door entry systems
- 150x27/39x34 (mm)

Key Features

Specialist Locks, Solenoid Bolts, Door Handle Magnets, Shear Locks



SB200-LS

- Solenoid bolt
- Operating voltage - 12VDC
- Standby current - 250mA
- Operating current - 650mA
- Power to Lock
- Fail-safe operation
- Delay timer (0/3/6/9) seconds
- Monitored output for door status
- Holding force 1000kg
- 200x35x38 (mm)



DBGLS150

- Glass door drop bolt
- Fail-safe version
- Operating voltage - 12VDC
- Delay timer (0/3/6/9) seconds
- For use on glass doors and frames
- Holding force 1000kg
- For use on doors up to 15mm
- 148x42x38 (mm) (Bolt portion)
- 148x46x25 (mm) (Recess portion)



DHM600

- Slimline / Mini magnet
- 600lbs (280kg) holding force
- Aluminium housing
- 12VDC @500mA or 24VDC @250mA
- Built in time delay 0/2.5/5/9 seconds
- Built in exit button
- Built in surge protection
- 274x46x30 (mm) Magnet
- 300x92x58 (mm) Handle



MSL2600

- Shear Lock
- Door open delay timer
- Door position outputs
- 12V or 24V DC (auto adjusting)
- 220mA @ 12VDC / 190mA @ 24VDC
- Maximum holding force of 1200kg or 2600lbs
- 180x25x30 (mm) Magnet
- 181x24x30 (mm) Armature

Key Features

Door hold open magnet, Floor or Wall Mounted, Black or White



DR-01/BK

DR-01/W

- Door retaining magnet
- Holding force: 45kg (450N)
- Voltage: 24VDC
- Current draw: 70mA
- 2mm stainless steel faceplate
- Extra high impact/strength ABS enclosure
- Manual release push button
- Fire tested to BSEN1634-1-2014
- 30 & 60 minute timber door sets
- 90x90x40/50 (mm)
- Armature length 45mm

- Available in Black or White



DR-01-BKT/BK

DR-01-BKT/W

- Stainless steel brackets
- Powder coated in black or white
- Allows product to be floor mounted
- 117x90x40 (mm)



Maglock Accessories Range



Key Features

Maglock Accessories, Armature Plates, Spare Screw Sets,

ARM600



Replacement armature ML600 range
180x35x10 (mm)

ARM1200



Replacement armature ML1200 range
185x60x15 (mm)

600GB & 1200GB



Spare fixing kits for magnets

600BK & 1200BK



Spare fixing kits for brackets

BK600L



L Bracket ML600 range

BK600ZL



ZL Bracket ML600 range

AH600



Armature Housing ML600 range

AH1200



Armature Housing ML1200 range

BK1200ZL



ZL Bracket ML1200 range

BK1200L



L Bracket ML1200 range

BKEX600ZL



ZL Bracket EXML600 range

BKEX1200ZL



ZL Bracket EXML1200 range

BK300ZL



ZL Bracket ML300 range

BK600U



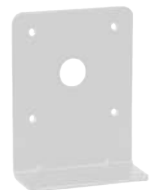
U Bracket ML600 range

DR-01-BKT/BK



Floor Bracket DR-01 range

DR-01-BKT/W



Floor Bracket DR-01 range



POWER SUPPLIES

12V Power supplies
24V Power supplies
Transformer Rectifier Power Supplies
Special Power Supplies

12V Power Supply Range

Key Features

12VDC Switchmode Power Supplies, Boxed and Unboxed, Monitored

12v Power Supplies (small box)



- Full current to load.
- 13.8VDC regulated output.
- Additional battery charging.
- Deep discharge protection.
- Current limiting.
- Short circuit protection.
- Mains transient protection.
- Compliant to EMC EN61000-6-1 & 3
- Can house a battery up to 12V 9Ah
- 225x196x75 (mm)

| | |
|----------|--------------|
| 1201SM-1 | 12v 1amp PSU |
| 1202SM-1 | 12v 2amp PSU |
| 1203SM-1 | 12v 3amp PSU |

12v Power Supplies (large box)



- Full current to load.
- 13.8VDC regulated output.
- Additional battery charging.
- Deep discharge protection.
- Current limiting.
- Short circuit protection.
- Mains transient protection.
- Compliant to EMC EN61000-6-1 & 3
- Can house a battery up to 12V 17Ah
- 310x340x80 (mm)

| | |
|----------|--------------|
| 1201SM-2 | 12v 1amp PSU |
| 1202SM-2 | 12v 2amp PSU |
| 1203SM-2 | 12v 3amp PSU |
| 1205SM-2 | 12v 5amp PSU |

12v Power Supplies (chassis)



- Full current to load.
- 13.8VDC regulated output.
- Additional battery charging.
- Deep discharge protection.
- Current limiting.
- Short circuit protection.
- Mains transient protection.
- Compliant to EMC EN61000-6-1 & 3
- 200x110x42 (mm) (1, 2 & 3amp)
- 270x110x48 (mm) (5 amp)

| | |
|-----------|--------------|
| 1201SM-CH | 12v 1amp PSU |
| 1202SM-CH | 12v 2amp PSU |
| 1203SM-CH | 12v 3amp PSU |
| 1205SM-CH | 12v 5amp PSU |

Monitored Power Supplies



- Full current to load plus additional battery charging.
- 13.8VDC regulated output.
- Deep discharge protection.
- Fault outputs:
 - Mains fail
 - Battery fail
 - Output / fuse fail
- Monitors battery health
- 310x340x80 (mm)

| | |
|------------|--------------|
| 1201SM-2MP | 12V 1amp PSU |
| 1202SM-2MP | 12V 2amp PSU |
| 1203SM-2MP | 12V 3amp PSU |

12V Power Supply Range



Key Features

12VDC Switchmode Power Supplies, Boxed, EN2 & 3

EN Power Supplies (large box)

EN50131-6:2008



- Full current to load plus additional battery charging
- 13.8VDC regulated output
- 3amp power supply
- Deep discharge protection
- Security front tamper (grade 2) or front and rear tamper (grade 3)
- Fault outputs:
 - EPS fault (mains fail)
 - APS fault (battery fail)
 - PO fault (output fail) (Grade 3)
- Can recharge a 9Ah battery (min 10v) to 80% in 24hours (1209)
- Can recharge a 18Ah battery (min 10v) to 80% in 24hours (1218)
- Monitors battery health
- 310x340x80 (mm)

| | |
|--------------|--|
| EN2-1209SM-2 | Advanced monitoring PSU (9Ah) Grade 2 |
| EN3-1209SM-2 | Advanced monitoring PSU (9Ah) Grade 3 |
| EN2-1218SM-2 | Advanced monitoring PSU (18Ah) Grade 2 |
| EN3-1218SM-2 | Advanced monitoring PSU (18Ah) Grade 3 |

EN Power Supplies (small box)

EN50131-6:2008



- Full current to load plus additional battery charging
- 13.8VDC regulated output
- 1amp power supply
- Deep discharge protection
- Security front tamper (grade 2) or front and rear tamper (grade 3)
- Fault outputs:
 - EPS fault (mains fail)
 - APS fault (battery fail)
 - PO fault (output fail) (Grade 3)
- Can recharge a 9Ah battery (min 10v) to 80% in 24hours
- Monitors battery health
- 265x197x72 (mm)

| | |
|--------------|---------------------------------------|
| EN2-1209SM-5 | Advanced monitoring PSU (9Ah) Grade 2 |
| EN3-1209SM-5 | Advanced monitoring PSU (9Ah) Grade 3 |



-4 Box (Extra Deep Box)

EN50131-6:2008



- Full current to load plus additional battery charging
- 13.8VDC regulated output
- 1amp power supply
- Deep discharge protection
- Security front tamper (grade 2) or front and rear tamper (grade 3)
- Fault outputs:
 - EPS fault (mains fail)
 - APS fault (battery fail)
 - PO fault (output fail) (Grade 3)
- Can recharge a 24Ah battery (min 10v) to 80% in 24hours (1224)
- Can recharge a 38Ah battery (min 10v) to 80% in 24hours (1238)
- Monitors battery health
- 353x380x195 (mm)

| | |
|--------------|--|
| EN2-1224SM-4 | Advanced monitoring PSU (24Ah) Grade 2 |
| EN3-1224SM-4 | Advanced monitoring PSU (24Ah) Grade 3 |
| EN2-1238SM-4 | Advanced monitoring PSU (38Ah) Grade 2 |
| EN3-1238SM-4 | Advanced monitoring PSU (38Ah) Grade 3 |

24V Power Supply Range



Key Features

24VDC Switchmode Power Supplies, Boxed and Unboxed

24V Power Supplies (large box)



- Full current to load.
- 27.6VDC regulated output.
- Additional battery charging.
- Deep discharge protection.
- Current limiting.
- Short circuit protection.
- Mains transient protection.
- Compliant to EMC EN61000-6-1 & 3
- Can house 2 batteries up to 12V 7Ah
- 310x340x80 (mm)

| | |
|----------|--------------|
| 2401SM-2 | 24V 1amp PSU |
| 2402SM-2 | 24V 2amp PSU |
| 2403SM-2 | 24V 3amp PSU |
| 2405SM-2 | 24V 5amp PSU |

24V Power Supply (chassis)



- Full current to load
- 27.6VDC regulated output
- Additional battery charging
- Deep discharge protection
- Current limiting
- Short circuit protection
- Mains transient protection
- Compliant to EMC EN61000-6-1 & 3
- 200x110x42 (mm) (1 amp)
- 270x110x48 (mm) (2, 3 & 5 amp)

| | |
|-----------|--------------|
| 2401SM-CH | 24V 1amp PSU |
| 2402SM-CH | 24V 2amp PSU |
| 2403SM-CH | 24V 3amp PSU |
| 2405SM-CH | 24V 5amp PSU |

Monitored Power Supplies

EN54 Features



- Full current to load plus additional battery charging.
- 27.6VDC regulated output.
- Deep discharge protection.
- Fault outputs:
 - Mains fail
 - Battery fail
 - Output / fuse fail
- Monitors battery health
- 310x340x80 (mm)

| | |
|------------|--------------|
| 2401SM-2MP | 24V 1amp PSU |
| 2402SM-2MP | 24V 2amp PSU |
| 2403SM-2MP | 24V 3amp PSU |

Transformer Rectifier PSU Range

Key Features

Power Supplies - Made for use with Door Hold Open Magnets



Transformer Rectifier

Switchmode

- Ideal for hold open magnets
- Output released on fire alarm activation
- Not for use with back up battery
- Full current to load
- 24VDC regulated output
- LED indicators
- Short circuit protection
- 200x200x65 (mm)

| | |
|-----------|--------------------|
| 2402/4TRS | 24V 2amp 4 way PSU |
| 2404/8TRS | 24V 4amp 8 way PSU |

door retainers



FIRE TESTED

RGL have a range of door retainers that have been fire tested to **BSEN1634-1-2014**

(30 & 60 minute timber door-sets)



Key Features

Specialist Power Supplies and Enclosures, to suit a variety of requirements

SM-3 (Extra Large Box)



- Extra large PSU box
- Suitable for all our switchmode power supply modules
- Clam shell box
- Can house 2 x 12V 17Ah
- 420x410x87 (mm)



-4 Box (Extra Deep Box)



- Extra deep PSU box
- Suitable for all our switchmode power supply modules
- Hinged box
- Can house 2 x 12V 24Ah batteries
- 353x380x195 (mm)



Lockable PSU



- Full current to load.
- 13.8VDC regulated output.
- 1amp power supply
- Additional battery charging.
- Deep discharge protection.
- Current limiting.
- Short circuit protection.
- Mains transient protection.
- Compliant to EMC EN61000-6-1 & 3
- Can house a battery up to 12V 9Ah
- Hinged box
- Lockable cam with 2 x keys
- 265x195x72 (mm)

| | |
|-------------|--------------|
| 1201SM-5CAM | 12V 1amp PSU |
| 1202SM-5CAM | 12V 2amp PSU |
| 1203SM-5CAM | 12V 3amp PSU |



CCTV POWER SUPPLIES

12V Switchmode Range
24V Switchmode Range

12V Power Supply Range



Key Features

CCTV Power Supplies, Boxed, No Battery Back Up, 12VDC

CP12-4



- 4 replaceable fuses - 3amps
- Full current to load
- 12VDC regulated output
- Fuse status indication
- Current limiting fuses
- LED Indicators (mains on)
- 205x165x55 (mm)

CP12-5



- 5 replaceable fuses - 5amps (CP12-5)
- Full current to load
- 12VDC regulated output
- Fuse status indication
- Current limiting fuses
- LED Indicators (mains on)
- 205x205x55 (mm)

CP12-8

- 8 replaceable fuses - 5amps (CP12-8)
- Full current to load
- 12VDC regulated output
- Fuse status indication
- Current limiting fuses
- LED Indicators (mains on)
- 205x205x55 (mm)

CP12-10



- 10 replaceable fuses - 10amps
- Full current to load
- 12VDC regulated output
- Fuse status indication
- Current limiting fuses
- LED Indicators (mains on)
- 240x200x55 (mm)

CP12-16



- 16 replaceable fuses - 10amps
- Full current to load
- 12VDC regulated output
- Fuse status indication
- Current limiting fuses
- LED Indicators (mains on)
- 240x200x55 (mm)

Key Features

CCTV Power Supplies, Adapters, 12VDC

CP1210/SM



- 1amp power supply
- Input voltage 100-240V @ 50/60Hz
- Full current to load
- 12VDC regulated output
- LED indicators
- Fitted with 3pin plug and 1m mains cable

CP1230/SM



- 3amp power supply
- Input voltage 100-240V @ 50/60Hz
- Full current to load
- 12VDC regulated output
- LED indicators
- Fitted with 3pin plug and 1m mains cable

CP1250/SM



- 5amp power supply
- Input voltage 100-240V @ 50/60Hz
- Full current to load
- 12VDC regulated output
- LED indicators
- Fitted with 3pin plug and 1m mains cable



24V Adapter/Inline Range

Key Features

CCTV Power Supplies, Boxed, No Battery Back Up, 24VDC

CP2405



- 24VAC output
- 0.5amp power supply
- Fitted with 1m mains cable

CP2410



- 24VAC output
- 1amp power supply
- Fitted with 1m mains cable

CP2440

CP2440/4

CP2440/8



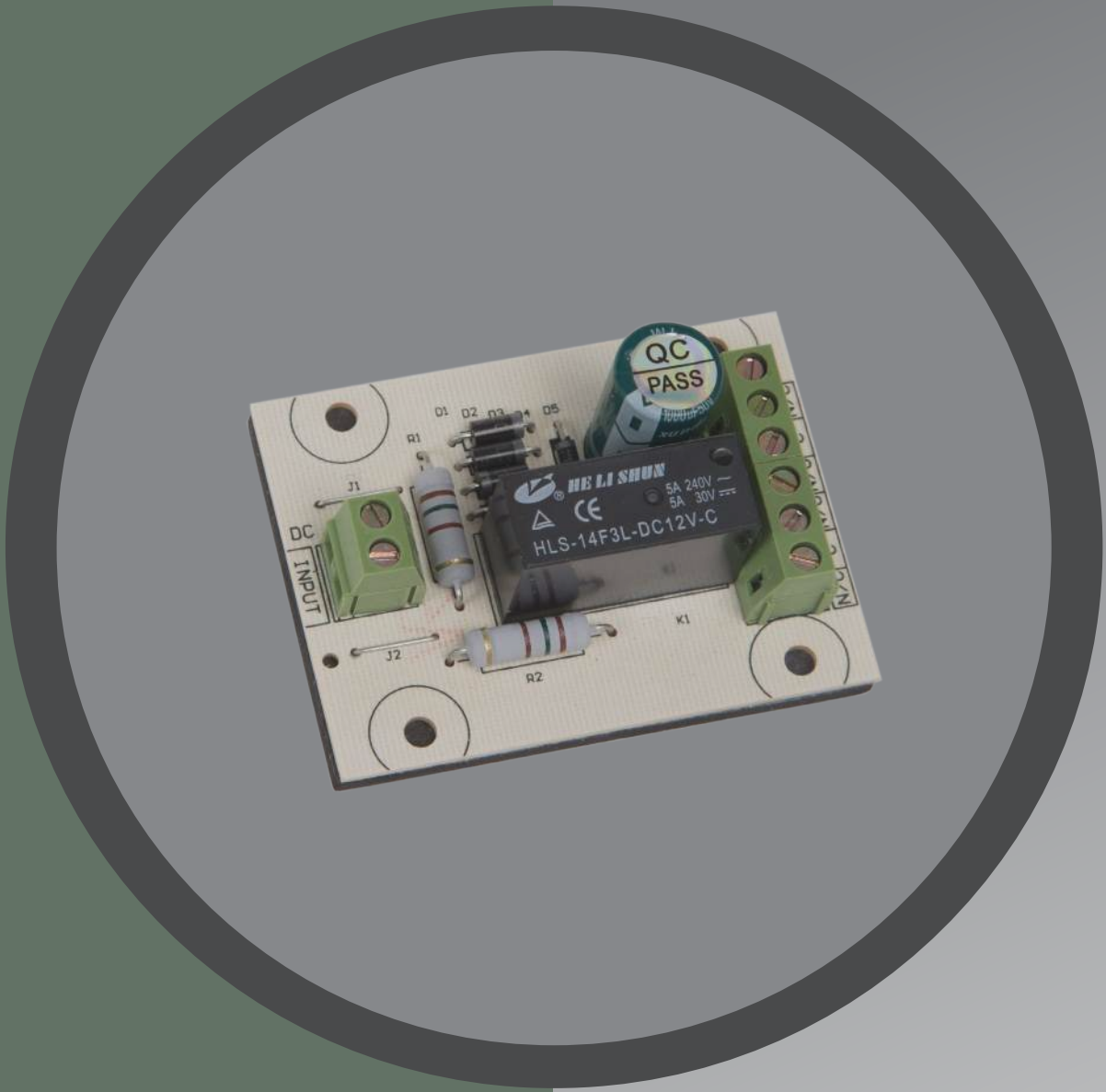
- 24VAC output
- 4amp power supply
- LED indicators (mains on, output status)
- CP2440 - fitted with a single output
- CP2440/4 - fitted with 4 x 1amp fuse module
- CP2440/8 - fitted with 8 x 0.5amp fuse module
- Clam shell box
- 225x140x80 (mm)

CP2460

CP2460/4



- | | |
|--|---|
| <ul style="list-style-type: none"> • 24VAC output • 6amp power supply • LED indicators (mains on, output status) • Fitted with a single output • Weatherproof box (IP66) • 180x180x90 (mm) | <ul style="list-style-type: none"> • 24VAC output • 6amp power supply • LED indicators (mains on, output status) • Fitted with 4 x 1amp fuse module • Weatherproof box (IP66) • 180x180x90 (mm) |
|--|---|



Accessories

- Relays and fused modules
- Timer and misc modules
- Door loops
- Empty boxes
- Spares & Accessories
- Access Kits

Key Features

Relays, Fused, Switching, Modules



RL01

- Low current mini switching relay
- 9- 20 VDC
- Coil 275 Ω
- Current 44 mA
- Contact rating 5A @250 VAC or 30 VDC
- 2 X COM-NO-NC



RL02

- Multi purpose relay
- 6- 40 VDC or 6- 30 VAC
- Coil 90 Ω
- Current 47 mA
- Contact rating 5A @250 VAC or 10 A @ 30 VDC
- 2 X COM-NO-NC



RL04

- 4 x individually fused 1amp outputs
- LED indication - Power input, Output active



RL08

- 8 x individually fused 0.5amp outputs
- LED indication - Power input, Output active

Key Features

Timer, Door Interlock, Fire, Voltage Reducing

RL03-LED/12

RL03-LED/24



- Timer relay unit
- 12V or 24V DC versions
- Contact rating 10A @ 125VAC or 10A @ 30VDC
- NC/COM/NO
- LED timer indication
- 0.1 to 999 seconds
- Or 1 to 999 minutes



DLIM



- Door lock interface module
- Control 2 doors for interlocking
- Two separate inputs/outputs
- Lock outputs are voltage free contacts 5A @ 24V
- Requires 12V supply

FRM-100

FRM-100/8



- Fire switching relay
- 12/24VDC
- Current 30mA
- Contact rating 5A @ 250VAC or 10A @ 24VDC
- 1 x COM/NO/NC
- LED indication
- Fire switching relay with 8 outputs
- 12/24VDC
- Current 30mA
- Contact rating 5A @ 250VAC or 10A @ 24VDC
- 1 x COM/NO/NC
- LED indication

VRM24-12



- Voltage reducing module
- Reduces voltage from 24VDC to 12VDC
- Inputs and output terminals
- Max current 1amp @12VDC





DL01

- Metal door loop
- Box fittings at each end
- Zinc alloy electroplated casing at both ends
- Alloy tube 450 mm long
- To take maximum 7 mm cable diameter
- External / Internal use
- Surface mounted



DL02

- Metal door loop
- Box fittings at each end
- Zinc alloy electroplated casing at both ends
- Alloy tube 600 mm long
- To take maximum 7 mm cable diameter
- External / Internal use
- Surface mounted



DL03

- Metal door loop
- 380 mm long
- Plastic fittings at each end
- Zinc alloy electroplated casing at both ends
- To take maximum 7 mm cable diameter
- External / Internal use
- Surface mounted





EMB

- Empty metal box
- Box secured with single screw
- White powder coated
- Hinged lid
- 265x197x72 (mm)



DOCBOX

- Lockable document box
- 2 keys supplied (606)
- Key removable in both positions
- White powder coated
- Hinged lid
- 300x235x50 (mm)



FIRE-DOCBOX

- Lockable document box (FIRE)
- 2 keys supplied (606)
- Key removable in both positions
- Red powder coated
- Hinged lid
- 300x235x50 (mm)



KP-LOCKBOX

- Lockable keypad box
- Internal plate is pre drilled to suit a number of control panel keypads
- 2 keys supplied
- Key removable in both positions
- White powder coated
- Hinged lid
- 205x190x55 (mm)



TRAN01



- Spare/additional transmitter
- For use with REC01

SPARE KEYS



| | |
|---------|--------------------------|
| KS1-KEY | KS-1 Spare Key (Pair) |
| KS2-KEY | KS-2 Spare Key (Pair) |
| 606-KEY | Docbox Spare Key (Pair) |
| KPL-KEY | Lockbox Spare Key (Pair) |

Proximity Fobs



| | |
|------------|-------------------------------------|
| KP-FOB-BE | Proximity Fob - Blue |
| KP-FOB-GY | Proximity Fob - Grey |
| KP-CARD | Proximity Card - Standard (85x54x1) |
| KP-HD-CARD | Proximity Card - Thick (85x54x2) |



Reset Key



- Replacement/spare reset key
- For use with EDR and Dual Unit ranges
- Supplied in packs of 10

FMS-KEY



- Key for firemans switches

Key Features

Standard, Push Plates, Stainless Steel or Plastic, Surface or Flush,
Includes Back Box, *Security Screws



ACKIT-1

- 1201SM-1 (12V 1amp PSU)
- ML600 (600lb / 280kg Magnetic Lock)
- BK600ZL (ZL Bracket)
- EBLS/DR (Exit Button)



ACKIT-2

- 1201SM-1 (12V 1amp PSU)
- ML600 (600lb / 280kg Magnetic Lock)
- BK600ZL (ZL Bracket)
- EBLS/DR (Exit Button)
- KP25 (Access Keypad)



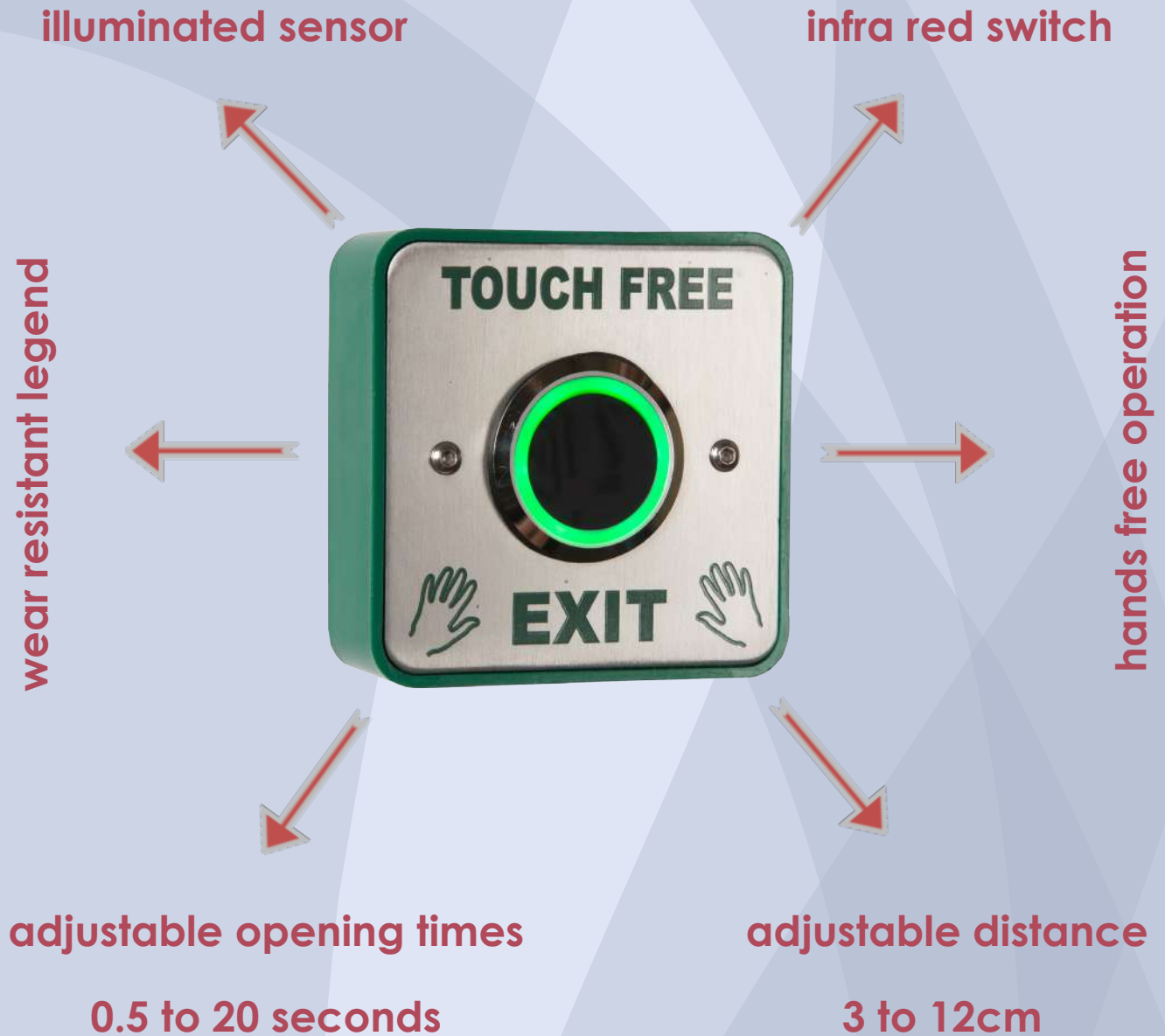
ACKIT-3

- 1201SM-1 (12V 1amp PSU)
- ML600 (600lb / 280kg Magnetic Lock)
- BK600ZL (ZL Bracket)
- EBGBWC02/PTE (Exit Button)
- EDR-1
- KPX1000
- Rainshield
- 10 x Grey Fobs



no touch button

An exceptional exit device that allows you to incorporate an in built time delay function, without the use of the control unit.



Allows for hand free operation, which is ideal in areas where strict germ control is required (hospitals, schools, nursing homes)

ebnt/tf-1



DISABLED TOILET ALARMS

Toilet alarm kits
Toilet alarm accessories

Key Features

2 Wire System, 3 or 4 Piece Kits, Available in Stainless Steel

C4A-4

C4A-3



- Call for assistance system
- Two wire system
- Integral power supply
- On board NO/NC relay
- Selectable reset button
- Power on indicator for mains supply
- Fault indicator
- C4A-4 is a four piece kit (Controller / Reset / Pull Cord / Indicator)
- C4A-3 does not include C4AIND



C4A-4/SS



- Stainless steel version
- Call for assistance system
- Two wire system
- Integral power supply
- On board NO/NC relay
- Selectable reset button
- Power on indicator for mains supply
- Fault indicator
- C4A-4/SS is a four piece kit (Controller / Reset / Pull Cord / Indicator)

C4ACTR

C4APC



- Main control unit
- Integral power supply
- Two wire system
- On board NO/NC relay
- Power on indicator for mains supply
- Fault indicator
- Selectable reset button (3 options)
- Pull for assistance cord
- Red pull cord - 2 red handles
- 3 metre cord
- Only compatible with C4A range



C4ARES

C4AIND



- Reset switch
- Integral sounder and LED indication
- Only compatible with C4A range
- Over door indicator
- Powerful sounder
- Bright LED indication
- Only compatible with C4A range



Call for assistance Accessories

C4A7MON



- 7 segment display monitor
- Allows you to monitor several systems from one central location
- Up to 10 systems can be linked into one device
- Indicates alarm
- Power on indicator for mains supply
- Fault indicator

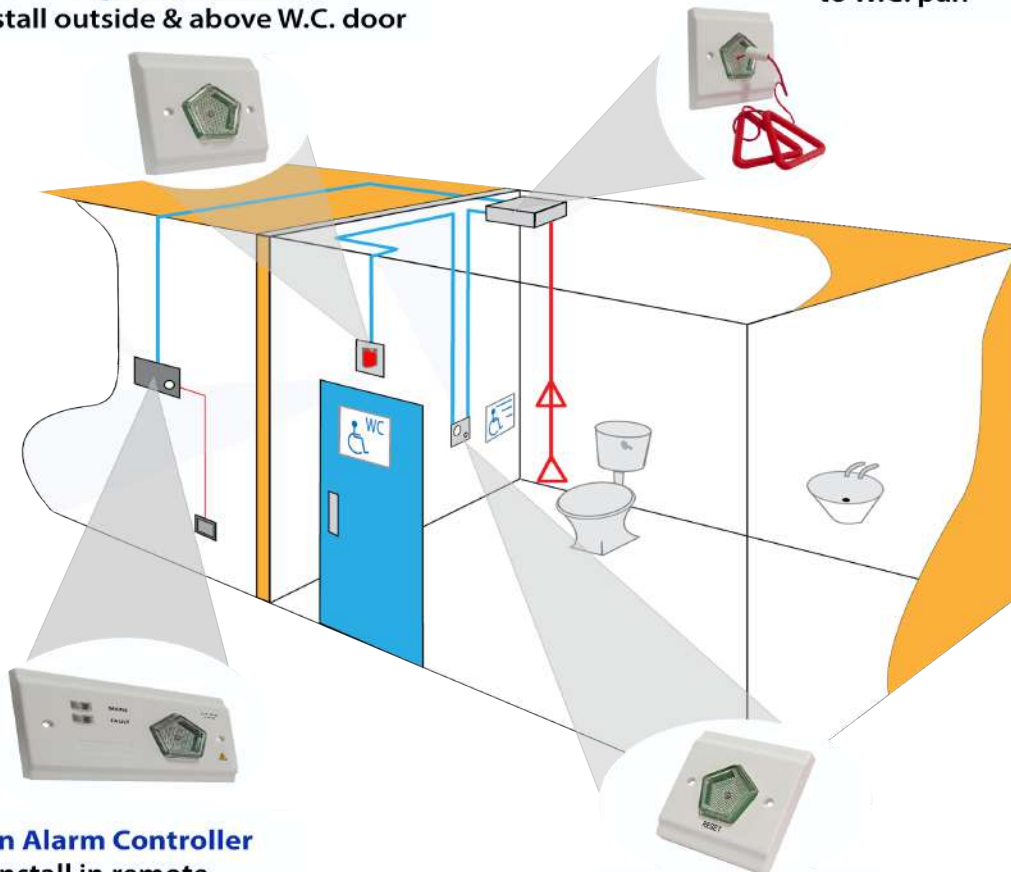
C4ANWM



- Module for connecting multiple C4A controllers onto a network
- Addresses are assigned from 01 to 99
- Several indications (alarm, mains fail, weak battery)

**External Indicator
Light & Sounder**
Install outside & above W.C. door

Pull for Assistance Cord
Install on ceiling adjacent
to W.C. pan



Main Alarm Controller
Install in remote
Staffed/ Reception area

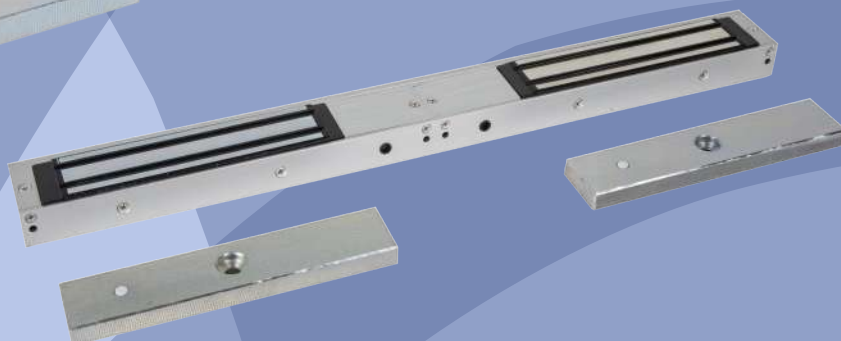
Reset Switch
Install on wall adjacent



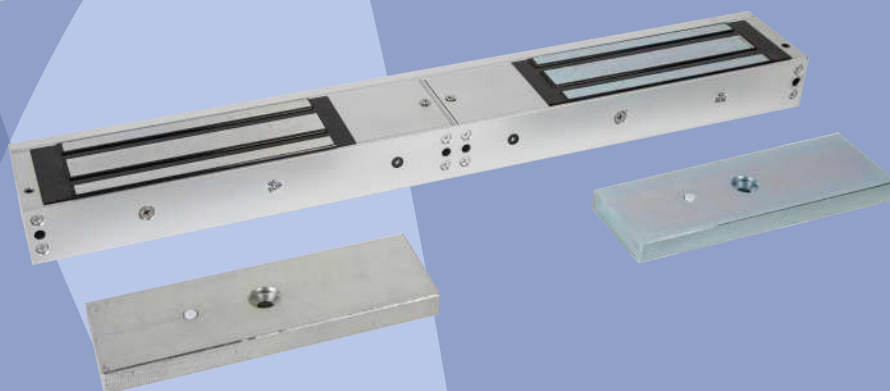
fire tested maglocks



ml600 range



ml1200 range



FIRE TESTED

RGL now have a range of magnets and brackets have that been fire tested to *BSEN1634-1-2014*

(30 & 60 minute timber door-sets)





FIRE PRODUCTS

Fire accessories



FIRE-DOCBOX

- Lockable document box (FIRE)
- 2 keys supplied (606)
- Key removable in both positions
- Red powder coated
- Hinged lid
- 300x235x50 (mm)



FRM-100

FRM-100/8

- Fire switching relay
- 12/24VDC
- Current 30mA
- Contact rating 5A @ 250VAC or 10A @ 24VDC
- 1 x COM/NO/NC
- LED indication
- Fire switching relay with 8 outputs
- 12/24VDC
- Current 30mA
- Contact rating 5A @ 250VAC or 10A @ 24VDC
- 1 x COM/NO/NC
- LED indication

24V Power Supplies (large box)



- Full current to load.
- 27.6VDC regulated output.
- Additional battery charging.
- Deep discharge protection.
- Current limiting.
- Short circuit protection.
- Mains transient protection.
- Compliant to EMC EN61000-6-1 & 3
- Can house 2 batteries up to 12V 9Ah
- 310x340x80 (mm)

| | |
|----------|--------------|
| 2401SM-2 | 24v 1amp PSU |
| 2402SM-2 | 24v 2amp PSU |
| 2403SM-2 | 24v 3amp PSU |
| 2405SM-2 | 24v 5amp PSU |

FMS-SURF

FMS-FLUSH



- NO/COM/NC
- Changeover contacts
- Tamper proof fixings
- Stainless steel
- Drop key units
- Key not included with units
- Surface or flush units available
- 127x157x76 (mm) (Surface)
- 125x155x76 (mm) (Flush)



Transformer Rectifier

Switchmode



- Ideal for hold open magnets
- Output released on fire alarm activation
- Not for use with back up battery
- Full current to load
- 24VDC regulated output
- LED indicators
- Short circuit protection
- 200x200x65 (mm)

| | |
|-----------|--------------------|
| 2402/4TRS | 24V 2amp 4 way PSU |
| 2404/8TRS | 24v 4amp 8 way PSU |



DR-01/BK

DR-01/W

- Door retaining magnet
- Holding force: 45kg (450N)
- Voltage: 24VDC
- Current draw: 70mA
- 2mm stainless steel faceplate
- Extra high impact/strength ABS enclosure
- Manual release push button
- Fire tested to BSEN1634-1-2014
- 30 & 60 minute timber door sets
- Floor mounting bracket purchased seperately
- 90x90x40/50 (mm)
- Armature length 45mm

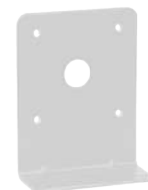


- Available in Black or White

DR-01-BKT/BK

DR-01-BKT/W

- Stainless steel brackets
- Powder coated in black or white
- Allows product to be floor mounted
- 117x90x40 (mm)





Electronics Ltd

RGL Electronics Ltd
Pelham Works,
Pelham Street,
Wolverhampton,
West Midlands
United Kingdom
WV3 OBJ

T : +44 (0)1902 656667
E : info@rgl.co
W : www.rgl.co